



**detax**

**Materials  
that matter**

# Workflow Guide Bonding

FREEPRINT<sup>®</sup> crown  
&  
FREEPRINT<sup>®</sup> denture impact

# Workflow Guide Content

## 1. Overview

## 2. Prepare crown / bridge

## 3. Check the fitting of denture base and crown / bridge

## 4. Bonding of denture base and crown / bridge

- Bonding material
- Process step 1 Prepare the application syringe
- Process step 2 How to fill the application syringe
- Process step 3 Apply bonding material
- Process step 4 Prepare for pre-bonding and curing
- Process step 5 Pre-bonding and curing  
(5.1 Optics Otofash G171 N<sup>2</sup> or 5.2 Rapidshape RS Cure)
- Process step 6 Visual check before final bonding and curing
- Process step 7 Final bonding and curing  
(7.1 NK Optics Otofash G171 N<sup>2</sup> or 7.2 Rapidshape RS Cure)

## 5. 3D Printing materials

## 6. Accessories

# 1) Overview

Follow the IFU instructions for washing the denture base and denture teeth with IPA.

## ATTENTION

After washing, don't post-expose the uncured components.

Wear personal protective equipment when handling the uncured material.



## 2) Prepare crown / bridge

Remove the supports from printed part carefully



### 3) Check the fitting of denture base and crown/bridge dx



# 4) Bonding of denture base and crown/bridge

dx

Bonding material

FREEPRINT® denture impact resin is used for bonding the denture teeth.

Make sure that you use the same color which you used for printing.



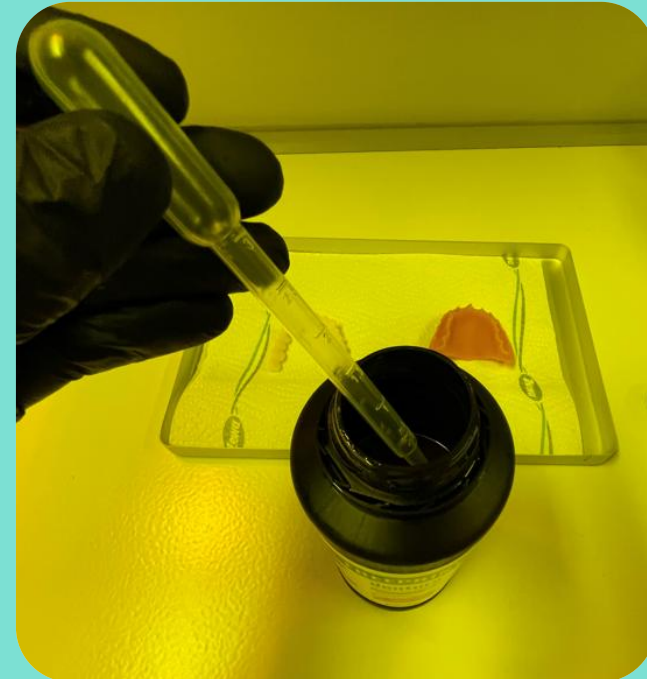
# 4) Bonding of denture base and crown/bridge

dx

## Process Step 1

Prepare the application syringe

- Detax recommends an application syringe for the application of the FREEPRINT® denture impact material.
- To remove the FREEPRINT® denture impact resin from the bottle, Detax recommends a pipette.



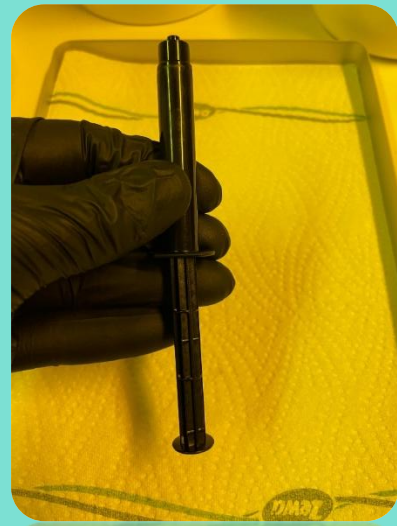
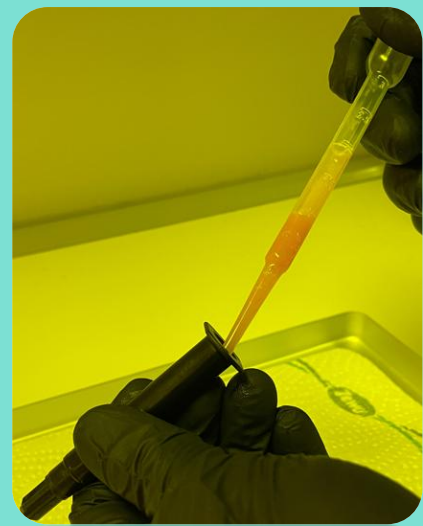
# 4) Bonding of denture base and crown/bridge

dx

## Process Step 2

How to fill the application syringe

- Fill the application syringe carefully.
- After filling the syringe, remove the cap carefully.
- Press the piston carefully and slowly into the syringe.
- Until a small amount of material comes out of the opening.



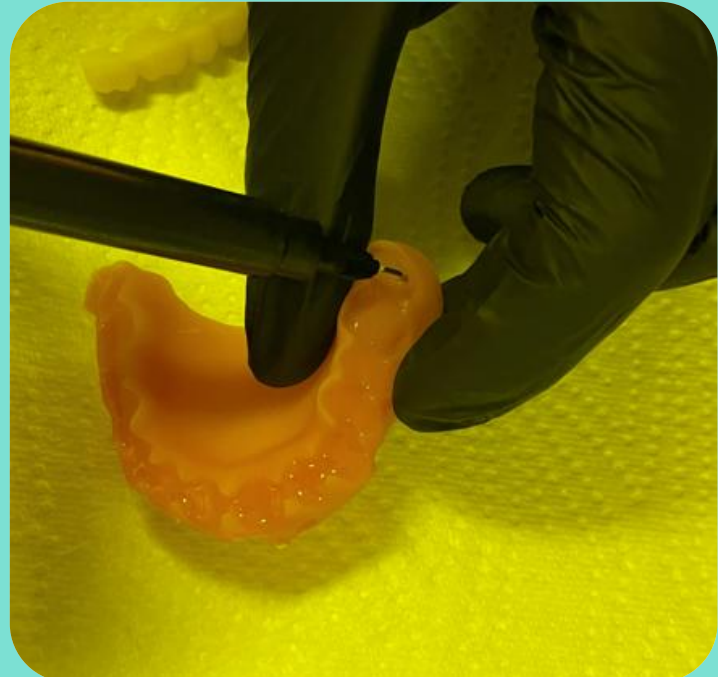
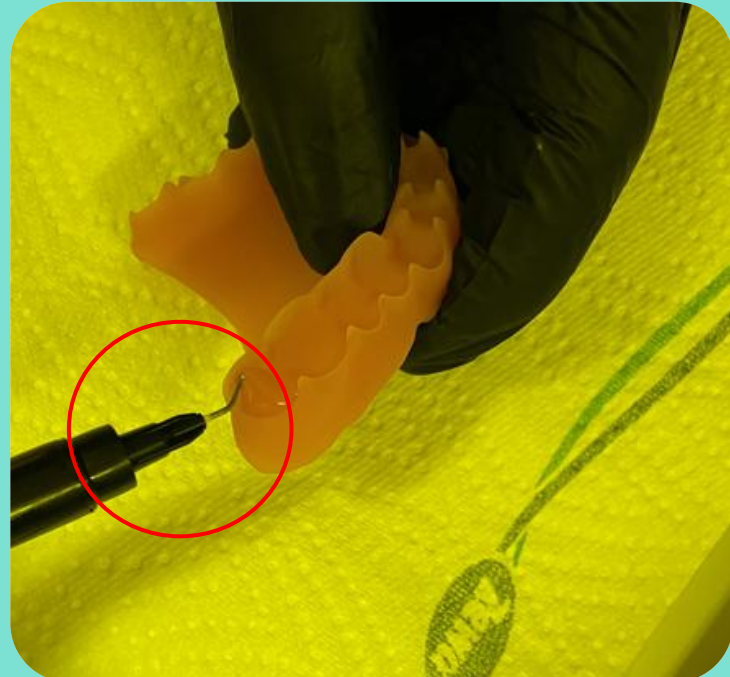
# 4) Bonding of denture base and crown/bridge

dx

## Process Step 3

Apply bonding material

- Place the application needle on the syringe.
- Apply the FREEPRINT® denture impact material with the syringe into the cavities with slight pressure.



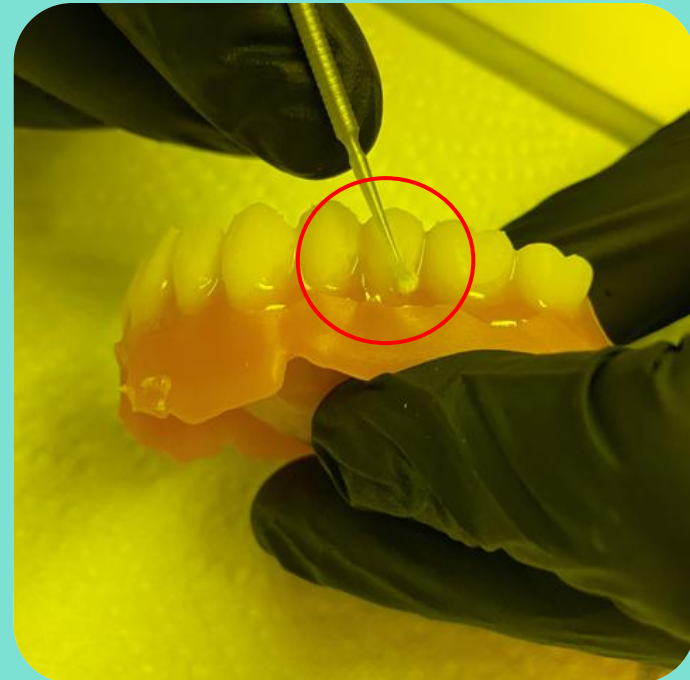
# 4) Bonding of denture base and crown/bridge

dx

## Process Step 4

Prepare for pre-bonding and curing

- Using a brush to remove the excess material on the cervix of the teeth.



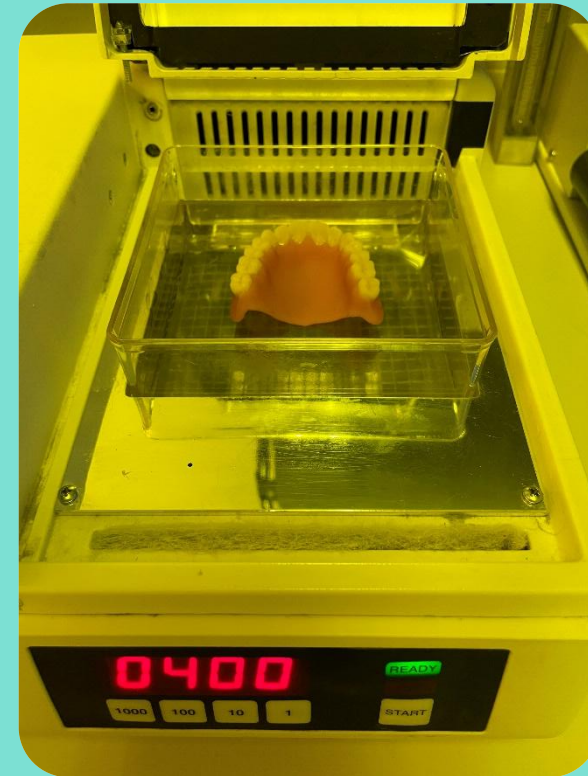
# 4) Bonding of denture base and crown/bridge

dx

Process step 5.1

NK Optics Otoflash G171 N<sup>2</sup>

- For pre-bonding and pre-curing, the denture (base and teeth) is cured with 400 flashes (Otoflash G171 N2) with nitrogen.
- Make sure you use the correct tray (UV360).



# 4) Bonding of denture base and crown/bridge

dx

Process step 5.2

Rapidshape RS Cure

- For pre-bonding and pre-curing, the denture (base and teeth) use parameter set **Detax Pre Bonding – Denture X & Crown** (without vacuuming)



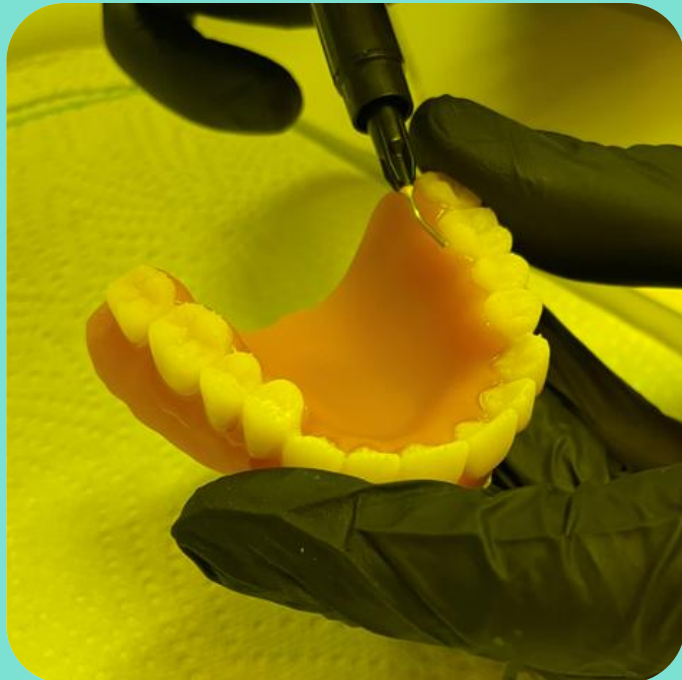
# 4) Bonding of denture base and crown/bridge

dx

## Process Step 6

Visual check before final boning and curing

- If material needs to be applied again, you can apply it now before the final curing.
- After final use, please close the syringe with the cap.



# 4) Bonding of denture base and crown/bridge

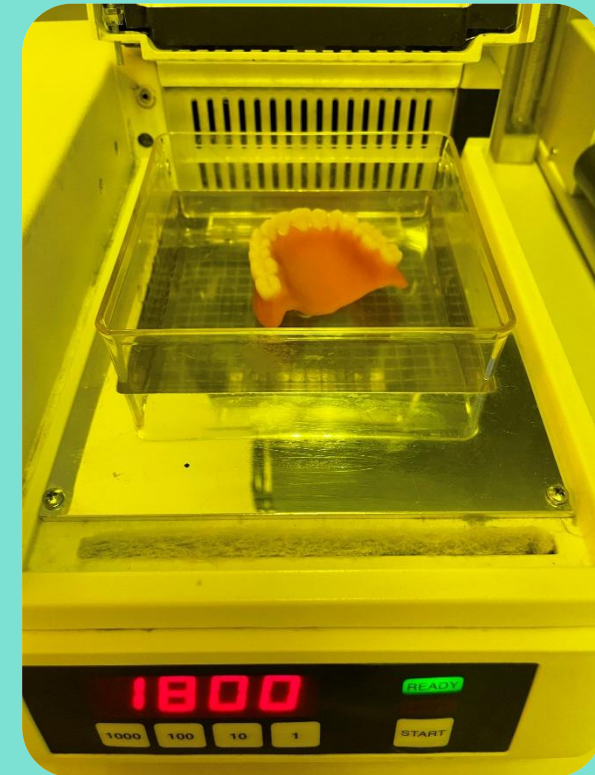
dx

Process step 7.1

Final bonding and curing

NK Optics Otoflash G171 N<sup>2</sup>

- For final bonding and curing, the denture (base and teeth) is cured with 2 x 1800 flashes (Otoflash G171 N2) with nitrogen.
- Between the 2 curing cycles, please turn the denture around.



# 4) Bonding of denture base and crown/bridge

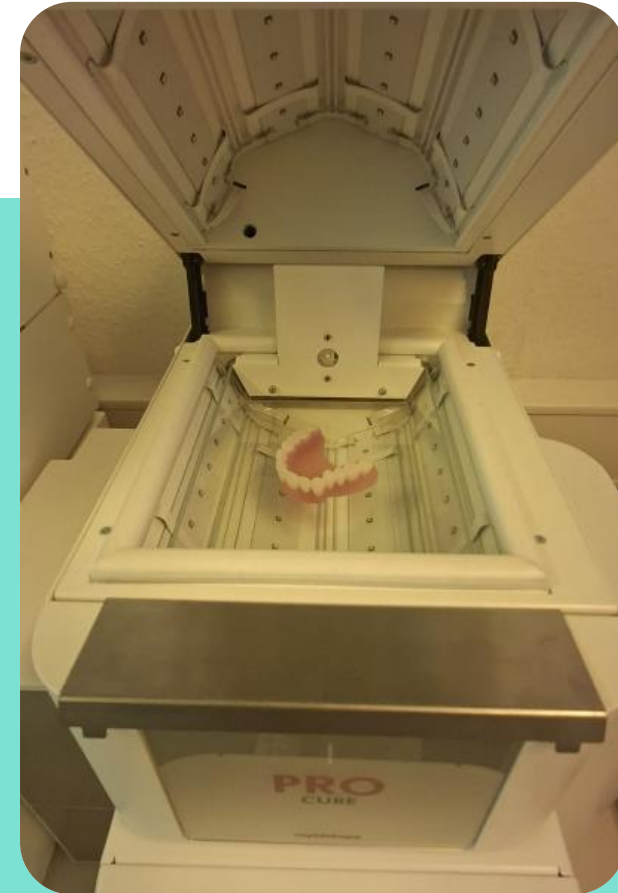
dx

Process step 7.2

Final bonding and curing

Rapidshape RS Cure

- For final bonding and curing, the denture (base and teeth) use parameter set **Detax Final Bonding – Denture Impact & Crown**.



# 4) Bonding of denture base and crown/bridge

dx

Process Finish

Finishing after light curing



## Interdental fine finishing

- If necessary, the excess FREEPRINT® denture resin can be grinded off in the interdental area using a diamond disc or a separating disc.

## Grinding in the occlusion

- Place the denture on the model and check the centric, protrusion, retral movements and sideshift in the articulator - the occlusion is successively grinding according to the grinding rules.

## Polish

- Smoothing the surface of the denture before polishing can be done classically with sandpaper strips.
- The polishing of the denture is done at the polishing unit from coarse to fine: 1. brush/pumice, 2. brush/polish and 3. buff/polish.

## Cleaning

- Clean the denture in the cleaning liquid in the ultrasonic unit for max. 1 min.
- It is possible to use a toothbrush and a steam jet for cleaning.

# 5) 3D Printing materials



FREEPRINT® crown

- FREEPRINT® crown A1 500 g 02372 1.000 g 02376
- FREEPRINT® crown A2 500 g 02378 1.000 g 02415
- FREEPRINT® crown A3 500 g 02417 1.000 g 02446
- FREEPRINT® crown A3,5 500 g 04709 1.000 g 04708
- FREEPRINT® crown B1 500 g 02481 1.000 g 02519
- FREEPRINT® crown B3 500 g 02645 1.000 g 02758
- FREEPRINT® crown C2 500 g 02766 1.000 g 02782
- FREEPRINT® crown D3 500 g 02783 1.000 g 02825
- FREEPRINT® crown BL 500 g 02845 1.000 g 02884



FREEPRINT® denture impact

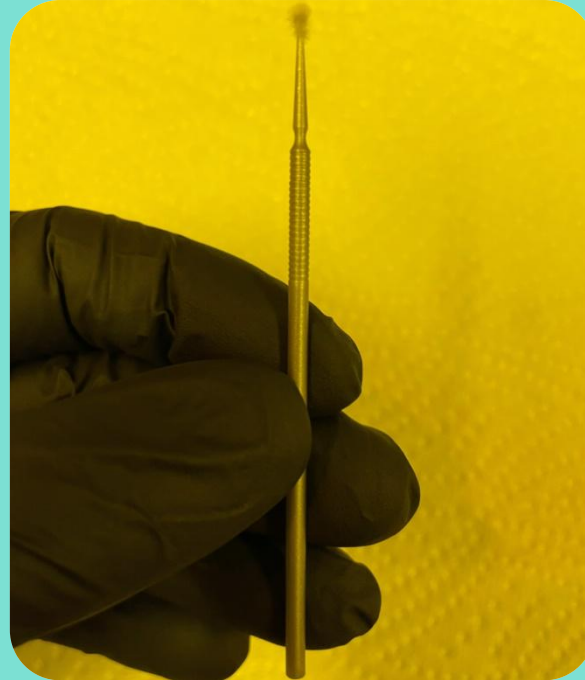
- FREEPRINT® denture impact pink-transparent 1.000 g 04436
- FREEPRINT® denture impact pink 1.000 g 04437

# 6) Accessories

- 04757 Bonding Set black 3 ml, 5 x application syringes incl. cap, 20 x application needles



- 02715 smartbrush, pack of 100 pcs.



**detax**

# Materials that matter

Thank you for your attention

[support@detax.de](mailto:support@detax.de)

**detax GmbH**  
Carl-Zeiss-Str. 4  
76275 Ettlingen, Germany  
[detax.de](http://detax.de)

© detax GmbH